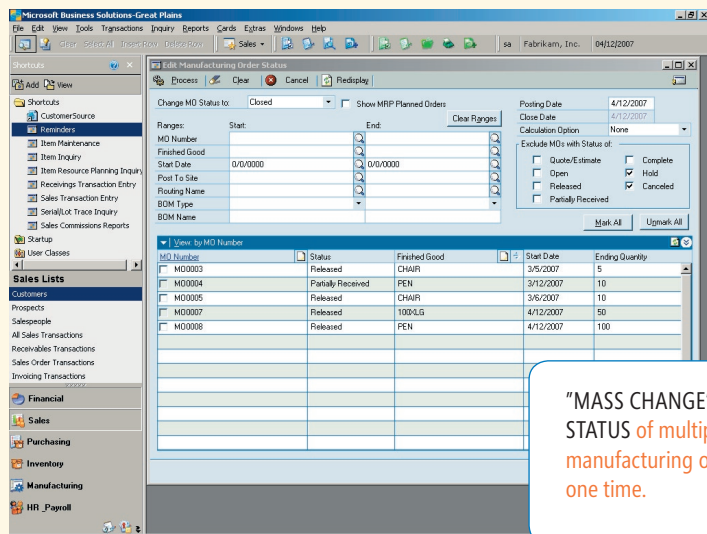
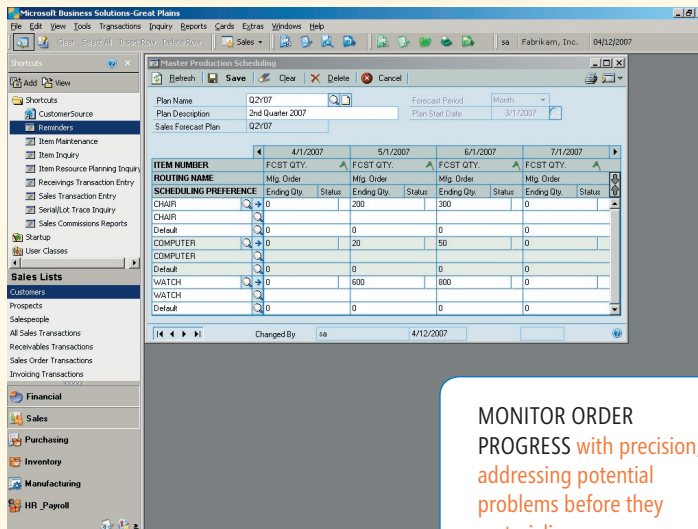


Manufacturing Order Processing

Track production costs in detail and manage work orders, the shop floor, and even outsourced processes. By directing the entire cycle of order processing, you can build a business that is both customer-driven and profitable.



"MASS CHANGE" THE STATUS of multiple manufacturing orders at one time.



MONITOR ORDER PROGRESS with precision, addressing potential problems before they materialize.

**Microsoft®
Business
Solutions**

Manage your costing more effectively

By providing timely, detailed, and accurate tracking of production costs, Manufacturing Order Processing for Microsoft® Business Solutions—Great Plains® enables tighter control of your processes—and greater control of profitability.

Define your operations in greater detail

More flexibility to define the manufacturing process means a better fit between the process and the product. Add the detail necessary for complicated operations, or simplify when the manufacturing environment is lean.

Leverage and control outsourcing

By managing outsourced operations more efficiently, you can focus more profitably on core competencies. This improves your competitive standing in today's tough markets.

Integrate seamlessly to better utilize manufacturing data

Integrated sales and production processes support flexible, efficient make-to-order environments. Integrating forecasting processes with production significantly improves planning in build to forecast or hybrid environments.

Access critical information—faster, easier, and in greater detail—for better decision making

Find the key information you need to make critical decisions with easy visibility into manufacturing orders, their progress, and associated costs.

B
E
N
E
F
I
T
S

Manufacturing Order Processing

	Manufacturing Orders
Quick Manufacturing Orders	The ability to set up “quick MOs” empowers timely recording of production, as well as the ability to backflush materials, labor, and machine expenses.
Improved Workflow	Sales orders can be set to flow easily into manufactured orders, thereby eliminating unnecessary steps and slashing cycle times. Manufacturing orders are then tied back to the sales orders from which they originated.
Precise Production Control	Defines end production quantities more efficiently. Establish set-ups taking maximum and minimum quantities into account, and provide alerts when acceptable ranges are breached. Account for variable factors like scrap and shrinkage.
Automated Scheduling	Calculate start and due dates automatically, based on the routing used. (If desired, or if situations indicate, dates may be entered manually.)
More Efficient Picking	To streamline picking operations and improve efficiency, picking documents for a range of manufacturing orders, components, sites, and dates may be printed.
On-Demand Allocation	Allocate, issue, and scrap components as needed. Operations also can be reversed to place components back into inventory.
Detailed Visibility and Management of Orders	Full or partial manufacturing orders can be received, with actual quantities, collected labor, machine costs, and backflush levels easily viewed and tracked. Users can override parameters as needed.
Comprehensive Variance Assessment	Variations can be tracked in dollars or percentages for each cost category by estimated, work-in-progress, and actual amounts. Variances may be viewed by unit or for complete manufacturing orders.
Flexible Rescheduling	To respond to unforeseen situations or delays, batches for sequences in manufacturing orders can be rescheduled quickly and easily.
Automated or Direct WIP Data Entry	Work-in-process data can be entered directly into the system, or automated by integration with many popular data collection devices.
Improved Collaboration with Outsourced Service Vendors	Purchase orders for outsourced services are easily generated based on manufacturing orders. Details of shipments sent to outside vendors are tracked precisely, supporting better control of supply chain processes. Outsourcing costs are included in the cost of the finished good.
Serial/Lot Linking	By linking serial or lot tracked components to serial or lot tracked finished goods, traceability is maintained through out the system.
Mass Manufacturing Order (MO) Status Change	The status of Manufacturing Orders can be easily changed, en masse, using the Mass MO Status Change function. You can also easily turn MRP Planner Orders into Open or Released Manufacturing Orders thereby ensuring that production is working to fulfill your time-phased material requirements.

Manufacturing Order Processing

FEATURES OVERVIEW

	Routing
As-Needed Definition	Define routings on an as-needed basis. A virtually unlimited number of routes can be assigned to items, each with a virtually unlimited number of sequences, to provide alternate routes when capacity is constrained.
Detailed Instruction Capability	Routing allows you to attach detailed notes to each sequence, providing clear direction through easy access to information designed to improve accuracy and efficiencies.
Flexible Routing	Sequences can be linked in sequential, overlapping and parallel routes for more efficient use of resources.
Reusable Sequences	Sequences within a route can be reused for repeat steps in the manufacturing process, helping save time and reduce costs.
In-Depth Sequence Control	Sequences are controlled for tight alignment with production processes. For example, a sequence may be designated as the last to run in a day, such as a painting step that requires overnight drying before production can take the next step in the route.
Elimination of Duplicate Effort	Duplicate effort in setting up or changing routes is eliminated by reusing sequences from routes, or by copying and modifying as necessary.
On-Time Routing of Materials	Help ensure that materials are where they are needed, when they are needed (and not before), by linking components from bills of materials to specific sequences.
	Work Center Management
Powerful Outsourcing Management	The system easily and efficiently manages outsourced work centers, allowing for outsourcing at any time in the manufacturing process.
Detailed Resource Allocation	Machines and employees are assigned to each work center. As employees are assigned, so are their effective capacity and availability. Alternate work centers are assigned efficiently to counteract bottlenecks when they occur.
Tight Schedule Control	The shifts that are run and the hours-per-shift at each work center are tracked to accommodate various work center schedules.
Consolidated Operations	Operations are easily grouped for more efficient cellular environments.
Automated Backflushing	Operations may be set to backflush labor and/or machine expenses automatically.

AVAILABLE WITH:



GREAT PLAINS



GREAT PLAINS STANDARD

Manufacturing Order Processing



FEATURES OVERVIEW

	Machine Definition
Fast Tracking of Asset Information	The system provides instant access to machine repair and maintenance information, including installation date, serial number, machine location, and warranty. Maintenance procedures and detailed notes are attached to each machine, improving Asset Maintenance procedures and shortening the learning curve for employees new to a piece of equipment.
	Costing
Detailed Tracking of Multiple Cost Factors	Costing tracks nine different cost categories: <ul style="list-style-type: none"> • Material • Fixed Material Overhead • Variable Material Overhead • Machine • Fixed Machine Overhead • Variable Machine Overhead • Labor • Fixed Labor Overhead • Variable Labor Overhead • Outsourcing
Flexible Cost Basing	Costing may be based on actual or standard costs.
Better Visibility of Cost Effects	As new standard costs are defined for components or services, bills of materials can be tracked to see their effects on cost of finished goods. Changes can be applied systemically or to a single bill of material.
Standard Cost Changes History	Provide a complete view of Standard Cost revaluations with automated recording of changes and the ability to generate historical reports.